

es
n
,
of

s-
ral
d

r-
d

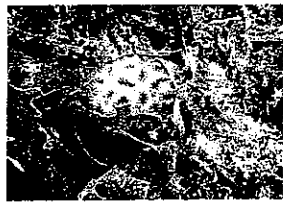
i
o
the
-al

is
ten

al-
s

s,
r-
se

he
:



5

stresses of people, boats, storms, silt, chemicals. Anything can push them over the edge.

Agricultural runoff, garbage, sewage, and thousands of products that humans discard have seriously raised the level of

PART II



Living to a Aging Sea

This colorful sea fan, a coral species, grows on healthy reefs off the Florida Keys.
Jenny Greenberg



A biologist studies a young crocodile to understand how this endangered species is adapting to the changing environment of south Florida.

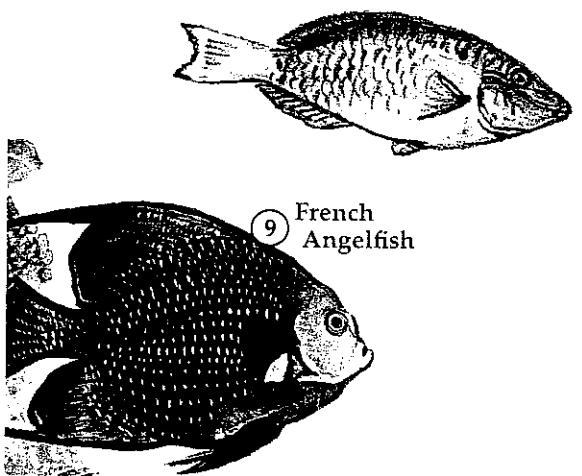
ogists investigating corals for clues about climate change. They'll also see how technology makes it possible for these scientists actually to live underwater for weeks at a time as they tour the National Undersea Research Center's underwater habitat, AQUARIUS. West of Key Largo in Florida Bay, students will explore mangrove islands and sea grass beds that offer refuge to a wide range of creatures, from baby sharks, tarpon, and dolphins to lobsters and sea turtles. And they'll find out how fresh water management schemes in south Florida and the Everglades may affect the endangered American crocodile.

6

PART II

THE CORAL REEF

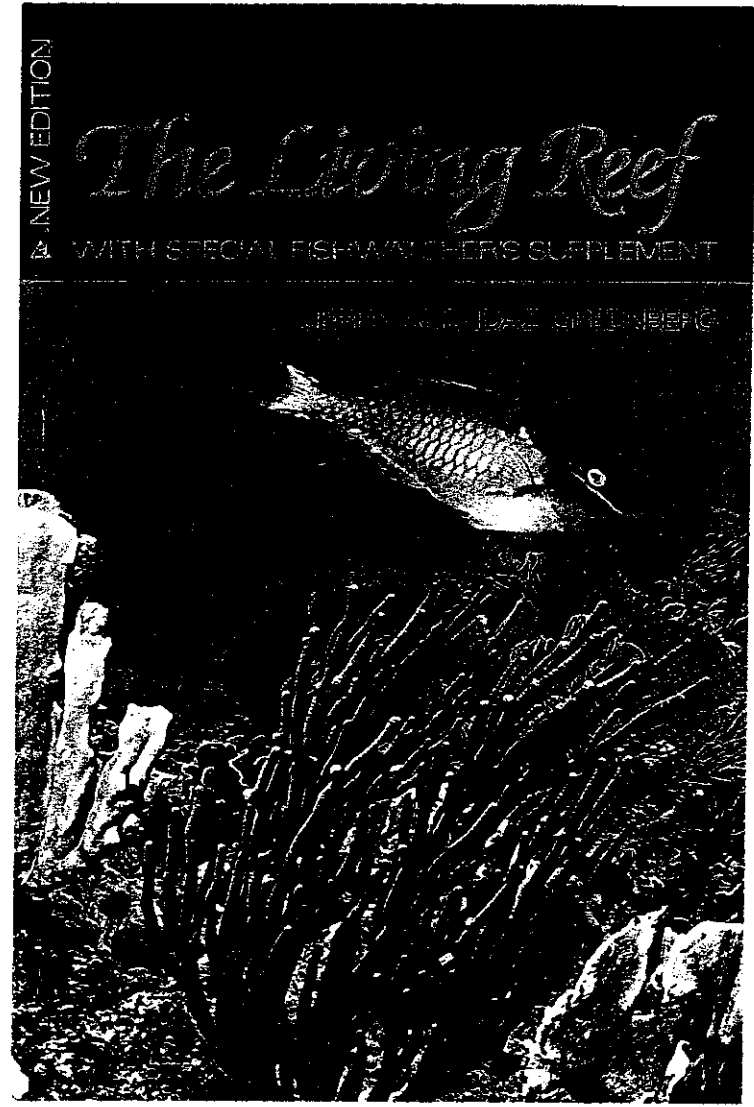
Match the lighted clue to its picture, then press the picture's number



9 French Angelfish

Butl

PART I



PART I